

Tubular Batch-type Ribbon Blenders

WBN



CERTIFIED

Foods

Plastics

Minerals

Cosmetics

Chemicals

Animal Feed

Organic Materials

Pharmaceuticals

Building Materials


Environmental Technology

HOMOGENEOUS MIXTURES

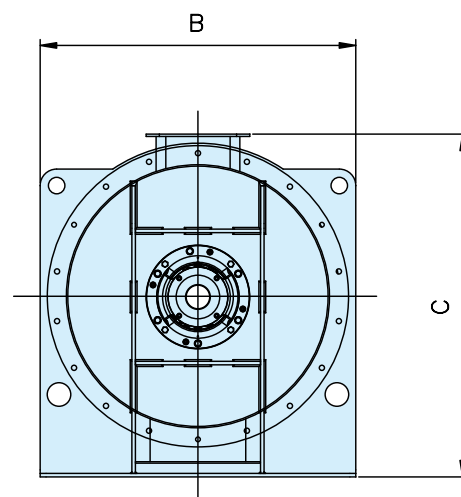
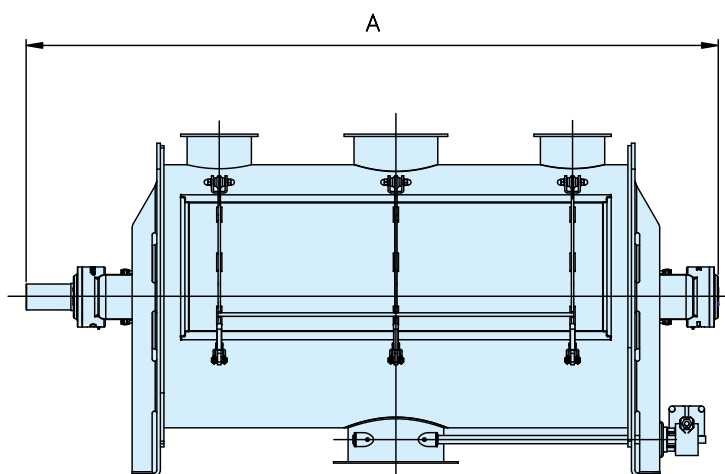
The WBN Batch-type Ribbon Blender, with its slowly turning single-shaft double counter-pitch ribbon screws, is the ideal machine to obtain high quality mixtures with fragile materials, at the same time conserving the physical properties of the product.

ATEX-certified machines are available that can operate in “zones” (according to the classification of the ATEX directive) with dust and gas explosive atmospheres, even in the presence of conductive powder.

Technical Features

- Capacity: 10 ~ 17,500 litres per batch
- Mixing time: 5 ~ 15 min
- Large hopper inlet or multiple round inlet spouts
- Operating atmospheres: group IIB for gas, group IIIC for dust
- ATEX-certified devices 
- ATEX certification compatible with all finishing materials for flights and chamber

Overall Dimensions

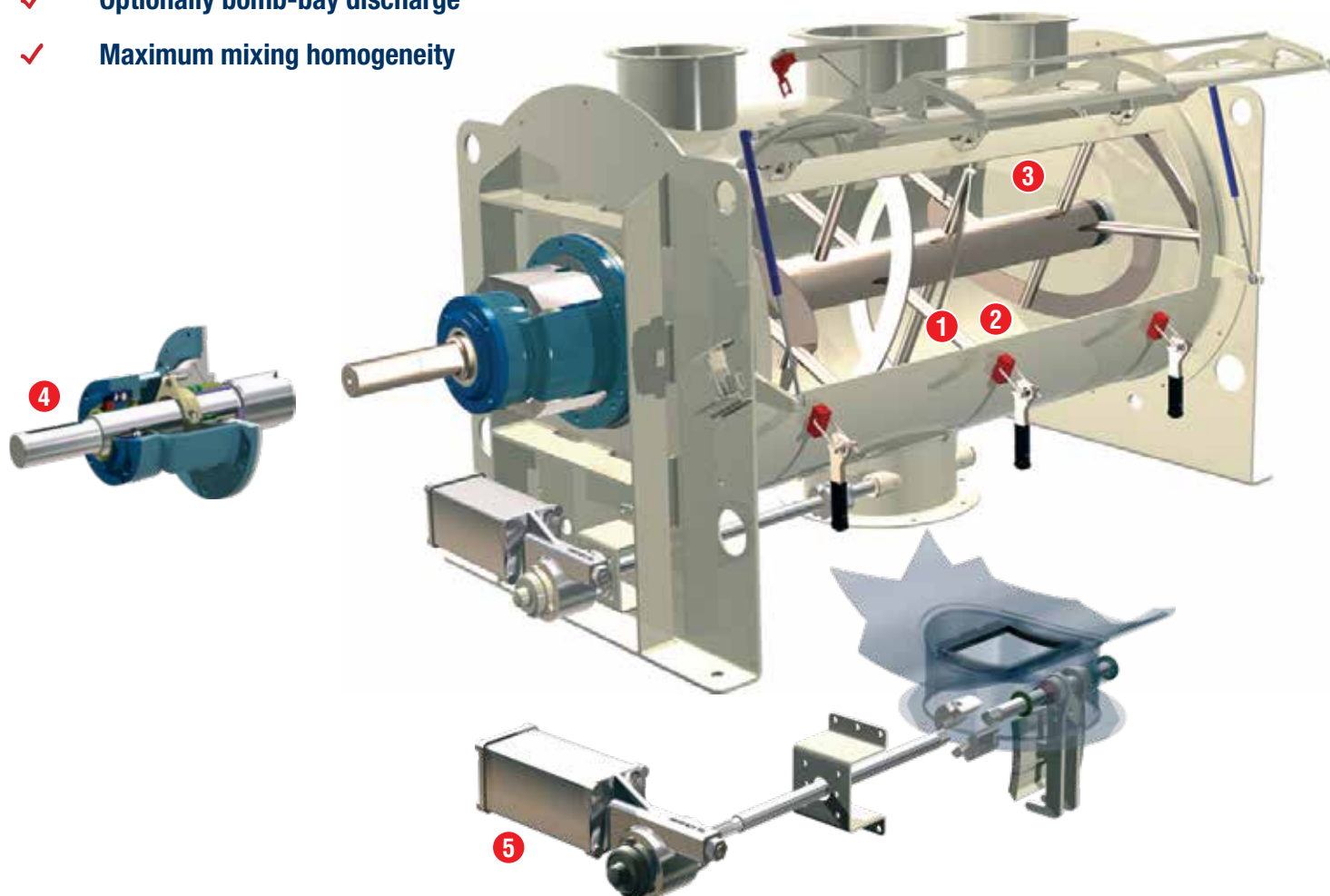


	A	B	C	Working Capacity (l)	Empty Weight (kg)
WBN 75	1,300	610	650	21 ~ 55	240
WBN 150	1,460	670	750	40 ~ 105	350
WBN 300	1,840	770	890	85 ~ 210	550
WBN 550	2,150	930	1,080	155 ~ 385	840
WBN 800	2,350	980	1,150	215 ~ 560	1,080
WBN 1100	2,690	1,100	1,280	315 ~ 770	1,400
WBN 1600	2,690	1,100	1,280	485 ~ 1,150	1,400
WBN 2000	2,920	1,340	1,460	551 ~ 1,400	2,100
WBN 3000	3,920	1,340	1,460	825 ~ 2,100	2,800
WBN 4800	4,520	1,500	1,750	1,340 ~ 3,360	4,300
WBN 6000	4,820	1,600	1,860	1,650 ~ 4,150	4,800
WBN 8800	5,390	1,810	2,130	2,450 ~ 6,150	5,800
WBN 10500	5,630	1,910	2,160	2,950 ~ 7,350	6,900
WBN 15000	6,120	2,110	2,450	4,100 ~ 10,500	8,200
WBN 20000	6,610	2,310	2,670	6,000 ~ 14,000	11,900
WBN 25000	6,880	2,430	2,740	7,500 ~ 17,500	13,650

Dimensions in mm

Benefits

- ✓ Blending of fragile materials without particle degradation
- ✓ Mixing know-how and test facilities
- ✓ Optionally bomb-bay discharge
- ✓ Maximum mixing homogeneity
- ✓ Easy access to machine interior
- ✓ Low maintenance
- ✓ High uptime



- 1 Blending shaft with double counter-pitch ribbon screws suitable for heavy-duty applications
- 2 Heavy-duty mixing chamber manufactured from carbon steel, anti-wear steel, or 304L / 316L stainless steel
- 3 Easy cleaning and access to all internal parts
- 4 End bearing assemblies in various shaft seal configurations and with the option of air or nitrogen purging
- 5 Flush discharge valve

Accessories



Large inspection door and easy-to-clean interior



Total bomb-bay discharge



Antistatic liner



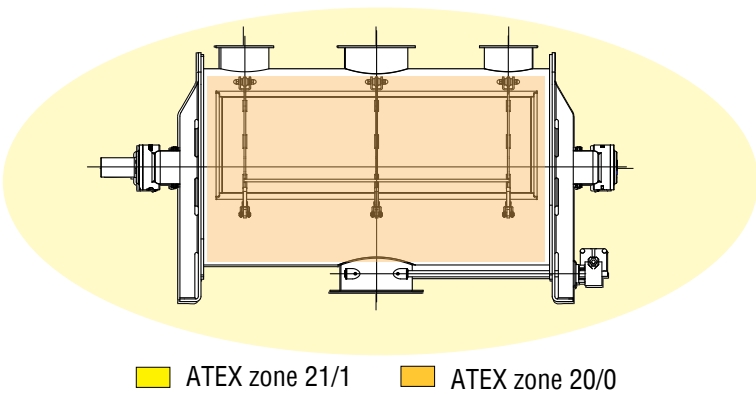
304L / 316L stainless steel internal polishing

Application



ATEX Zones

Zone: a place in which an explosive atmosphere is...	ATEX Zone	
	Gases	Dusts
continually present	0	20
likely to occur occasionally in normal operation	1	21
not likely to occur in normal operation and only for very short durations	2	22



203001194 November 2022 Rights reserved to modify technical specifications.



This brochure has been edited for distribution in European Union countries.

WAM[®]

TOREX[®]

MAP[®]

EXTRAC[®]

RONCUZZI[®]

FLITECH[®]

TECNO CM

SILOFAB

MVM

CHIOR[®]

SEPCOM

SPECO[®]

SAVI

SAVECO

